



CHATTERTON | REES



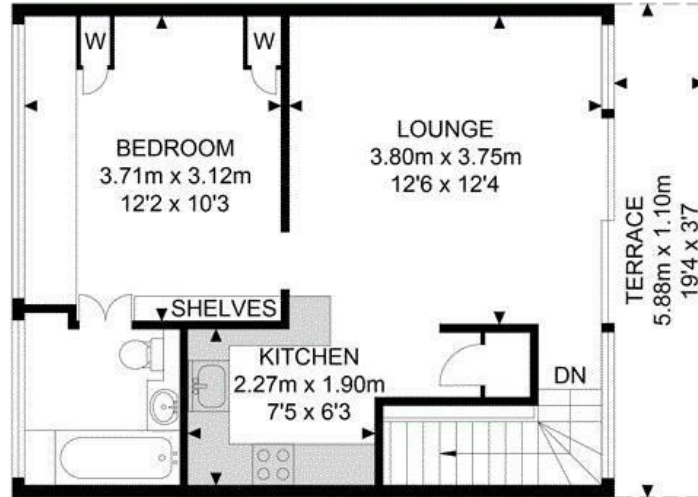
E, 483 Fulham Road, London, SW6 1HJ

**Asking price £475,000**

Ideally located this exceptional 1 bedroom flat boasts impressive levels of natural light due to its double fronted window aspect at the front and rear of the property in this pretty Victorian house. A large living area with a south facing balcony leads onto the modern separate kitchen. The bathroom is located just off the bedroom, which is a lovely large open space.



# Fulham Road



## 4th Floor



## 3rd Floor



APPROX. GROSS INTERNAL FLOOR AREA 471.45 SQ FT / 43.80 SQM  
 APPROX. GROSS EXTERNAL FLOOR AREA 71.04 SQ FT / 6.60 SQM

## Area Map



## Energy Efficiency Graph

Energy Efficiency Rating		
	Current	Potential
Very energy efficient - lower running costs		
(92 plus) <b>A</b>		
(81-91) <b>B</b>		
(69-80) <b>C</b>		
(55-68) <b>D</b>		
(39-54) <b>E</b>		
(21-38) <b>F</b>		
(1-20) <b>G</b>		
Not energy efficient - higher running costs		
<b>England &amp; Wales</b> EU Directive 2002/91/EC		
Environmental Impact (CO <sub>2</sub> ) Rating		
	Current	Potential
Very environmentally friendly - lower CO <sub>2</sub> emissions		
(92 plus) <b>A</b>		
(81-91) <b>B</b>		
(69-80) <b>C</b>		
(55-68) <b>D</b>		
(39-54) <b>E</b>		
(21-38) <b>F</b>		
(1-20) <b>G</b>		
Not environmentally friendly - higher CO <sub>2</sub> emissions		
<b>England &amp; Wales</b> EU Directive 2002/91/EC		

These particulars, whilst believed to be accurate are set out as a general outline only for guidance and do not constitute any part of an offer or contract. Intending purchasers should not rely on them as statements of representation of fact, but must satisfy themselves by inspection or otherwise as to their accuracy. No person in this firm's employment has the authority to make or give any representation or warranty in respect of the property.